



mining solutions

# ROCK BREAKERS



## From Founder's Desk



### GREETINGS FROM SMM!!

It gives me immense pleasure in placing on record my sincere thanks to all our customers and business associates for their continuous support and gratitude!!! Today, SMM enjoys greater competitive edge in the market place because of our high ethical business practices coupled with core strengths.

- 24X7 ONSITE ATTENTION
- PAN INDIA PRESENCE WITH OVER 200 PLUS TOUCH POINTS.
- SUPERIOR QUALITY MADE OUT OF REINFORCED WEAR-RESISTANT HARDENED MATERIAL.
- CUSTOMIZED DESIGN.
- COMPREHENDING GROUND REALITY.
- ON SPOT DECISION BY OUR TEAM.
- WAREHOUSE SUPPORT AT ALL MAJOR LOCATIONS ACROSS INDIA.
- CONTINUOUS PRODUCT DEVELOPMENT & UP-GRADATION.

We as a team at SMM pledge to give best quality products with continuous after sales service to our clients to their utmost satisfaction ensuring least possible downtime. It will always be our best endeavor to give all our customers superior quality products with renewed innovative methods of technology, rigidity, longer life of products and value for money.

Our "Bottom-Up" business model is highly customer friendly as authority and decision making powers are vested with ground level executives which will help in resolving issues instantly, Proves SMM is an Employee Driven Organization. Once again, I take this opportunity to put across my sincere thanks and warm regards to all associates for the confidence and trust vested on us.

**"SERVICE IS NOT JUST A COMMITMENT, IS A PHILOSOPHY OF SMM"**

**Mr. N. SATHISH KUMAR**

Founder, CMD




## SMM Rock Breakers

let's make better tomorrow - today

SMM Rock breakers are impact Equipment customized to break all kind of rock or concrete with maximum hardness & rugged property. They are Operated in various applications like primary rock breaking, secondary rock breaking, demolition, deconstruction, trenching, foundation works, etc.

We SMM Equipments Private Limited, a mining solutions firm in Customized Quality Rock Breakers Established in 1998 for carrier ranging from 1 to 120 tons. The rich integrities of this group makes very conducive work atmosphere for people working with us and we enjoy pride of negligible turnarounds of employees shaking hands to move away from us. With such a strong loyal workforce, SMM is moving forward with a mission of being a top player in market place. This vision was set sometime back and we are almost there.

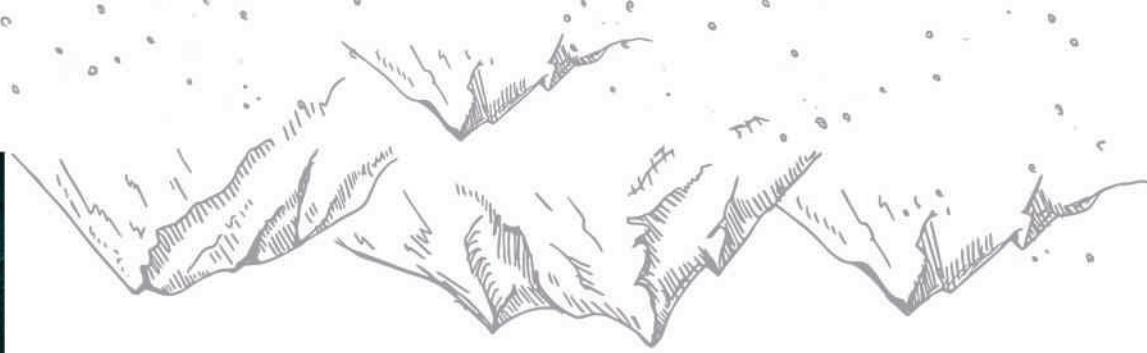


## Quality Policy

By deeply understanding the complexities, team at SMM is always driven with quality conscious and the management does not stand any amount of negligence whatsoever & defined the Quality Policy as follows...

- Build a mutual profitable relationship with our customers, ensuring their long-term success through the understanding of their needs.
- Achieve our commitments for quality, cost, and schedule
- Drive continual improvement and innovation based upon efficient business processes, well-defined measurements, best practices, and customer surveys.

SMM – GROWN ALONG WITH  
**CUSTOMER'S**  
WORD OF MOUTH



RENOWNED FOR  
**CUSTOMISATION**

## SMM 100S

Total Weight (Kg)	105
Operation Pressure (kg/cm <sup>2</sup> )	90 - 120
Oil Flow Range - l/min	15 - 25
Dia of Hose - Inch	1/2
Dia of Tool - mm	40
Impact Frequency - Bpm	800 - 1400
Suitable Carrier - Ton	0.8 - 2.5

## SMM 200S

Total Weight (Kg)	130
Operation Pressure (kg/cm <sup>2</sup> )	90 - 120
Oil Flow Range - l/min	20 - 30
Dia of Hose - Inch	1/2
Dia of Tool - mm	45
Impact Frequency - Bpm	700 - 1200
Suitable Carrier - Ton	1.2 - 3.0

## SMM 300S

Total Weight (Kg)	185
Operation Pressure (kg/cm <sup>2</sup> )	90 - 120
Oil Flow Range - l/min	25 - 50
Dia of Hose - Inch	1/2
Dia of Tool - mm	53
Impact Frequency - Bpm	600 - 1100
Suitable Carrier - Ton	2.50 - 4.5

## SMM 400S

Total Weight (Kg)	365
Operation Pressure (kg/cm <sup>2</sup> )	110 - 140
Oil Flow Range - l/min	40 - 70
Dia of Hose - Inch	1/2
Dia of Tool - mm	68
Impact Frequency - Bpm	500 - 900
Suitable Carrier - Ton	4.0 - 7.0



## SMM 430S / 435S

Total Weight (Kg)	410
Operation Pressure (kg/cm <sup>2</sup> )	120 - 150
Oil Flow Range - l/min	50 - 90
Dia of Hose - Inch	1/2
Dia of Tool - mm	75 / 80
Impact Frequency - Bpm	400 - 800
Suitable Carrier - Ton	6.0 - 9.0

## SMM 450S

Total Weight (Kg)	760
Operation Pressure (kg/cm <sup>2</sup> )	130 - 160
Oil Flow Range - l/min	60 - 100
Dia of Hose - Inch	3/4
Dia of Tool - mm	85
Impact Frequency - Bpm	400 - 800
Suitable Carrier - Ton	7.0 - 14.0

## SMM 500S

Total Weight (Kg)	870
Operation Pressure (kg/cm <sup>2</sup> )	150 - 170
Oil Flow Range - l/min	80 - 110
Dia of Hose - Inch	3/4
Dia of Tool - mm	100
Impact Frequency - Bpm	350 - 700
Suitable Carrier - Ton	10.0 - 15.0

## SMM 810LS / 810SS

Total Weight (Kg)	1450	1645
Operation Pressure (kg/cm <sup>2</sup> )	150 - 170	160-180
Oil Flow Range - l/min	90 - 120	145-180
Dia of Hose - Inch	1	1
Dia of Tool - mm	125	135
Impact Frequency - Bpm	350 - 650	360-460
Suitable Carrier - Ton	15 - 20	18 - 26



## SMM 810HS

Total Weight (Kg)	1890
Operation Pressure (kg/cm <sup>2</sup> )	160 - 180
Oil Flow Range - l/min	120 - 180
Dia of Hose - Inch	1
Dia of Tool - mm	140
Impact Frequency - Bpm	350 - 550
Suitable Carrier - Ton	18 - 26

## SMM 300GS

Total Weight (Kg)	2457
Operation Pressure (kg/cm <sup>2</sup> )	170 - 190
Oil Flow Range - l/min	150 - 190
Dia of Hose - Inch	1
Dia of Tool - mm	150
Impact Frequency - Bpm	350 - 700
Suitable Carrier - Ton	27 - 35

## SMM450GS

Total Weight (Kg)	3300
Operation Pressure (kg/cm <sup>2</sup> )	180 - 200
Oil Flow Range - l/min	200 - 270
Dia of Hose - Inch	1.25
Dia of Tool - mm	165
Impact Frequency - Bpm	250 - 380
Suitable Carrier - Ton	36 - 45

## SMM 550GS / 600GS

Total Weight (Kg)	4057	4956
Operation Pressure (kg/cm <sup>2</sup> )	180 - 220	190 - 220
Oil Flow Range - l/min	220 - 270	220 - 280
Dia of Hose - Inch	1.25	1.25
Dia of Tool - mm	175	185
Impact Frequency - Bpm	200 - 300	200 - 250
Suitable Carrier - Ton	38 - 50	45 - 65





## SMM 650GS

Total Weight (Kg)	5350
Operation Pressure (kg/cm <sup>2</sup> )	200 - 260
Oil Flow Range - l/min	270 - 330
Dia of Hose - Inch	1.25
Dia of Tool - mm	195
Impact Frequency - Bpm	150 - 200
Suitable Carrier - Ton	50 - 65

## SMM 680GS

Total Weight (Kg)	6210
Operation Pressure (kg/cm <sup>2</sup> )	200 - 260
Oil Flow Range - l/min	285 - 335
Dia of Hose - Inch	1.25
Dia of Tool - mm	200
Impact Frequency - Bpm	150 - 200
Suitable Carrier - Ton	65 - 90

## SMM 700GS

Total Weight (Kg)	7225
Operation Pressure (kg/cm <sup>2</sup> )	200 - 260
Oil Flow Range - l/min	335 - 385
Dia of Hose - Inch	1.25
Dia of Tool - mm	210
Impact Frequency - Bpm	140 - 180
Suitable Carrier - Ton	70 - 120

## SMM 1200GS

Total Weight (Kg)	11520
Operation Pressure (kg/cm <sup>2</sup> )	200 - 260
Oil Flow Range - l/min	390 - 470
Dia of Hose - Inch	1.5
Dia of Tool - mm	258
Impact Frequency - Bpm	200 - 350
Suitable Carrier - Ton	90 - 140





MINI EXCAVATOR  
Handling Several Application in Restricted Area

BACKHOE LOADER  
Three Pieces Combined Into One Piece of Equipment





EXCAVATOR  
Material Handler

## Suitable Carrier

<b>SMM 100S</b> 0.8 - 2.5 TONS	<b>SMM 810SS</b> 18 - 26 TONS
<b>SMM 200S</b> 1.2 - 3.0 TONS	<b>SMM 810HS</b> 18 - 26 TONS
<b>SMM 300S</b> 2.50 - 4.5 TONS	<b>SMM 300GS</b> 27 - 35 TONS
<b>SMM 400S</b> 4.0 - 7.0 TONS	<b>SMM 450GS</b> 36 - 45 TONS
<b>SMM 435S</b> 6.0 - 9.0 TONS	<b>SMM 550GS</b> 38 - 50 TONS
<b>SMM 450S</b> 7.0 - 14.0 TONS	<b>SMM 600GS</b> 45 - 65 TONS
<b>SMM 500S</b> 10.0 - 15.0 TONS	<b>SMM 650GS</b> 50 - 65 TONS
<b>SMM 810LS</b> 15 - 20 TONS	<b>SMM 680GS</b> 65 - 90 TONS

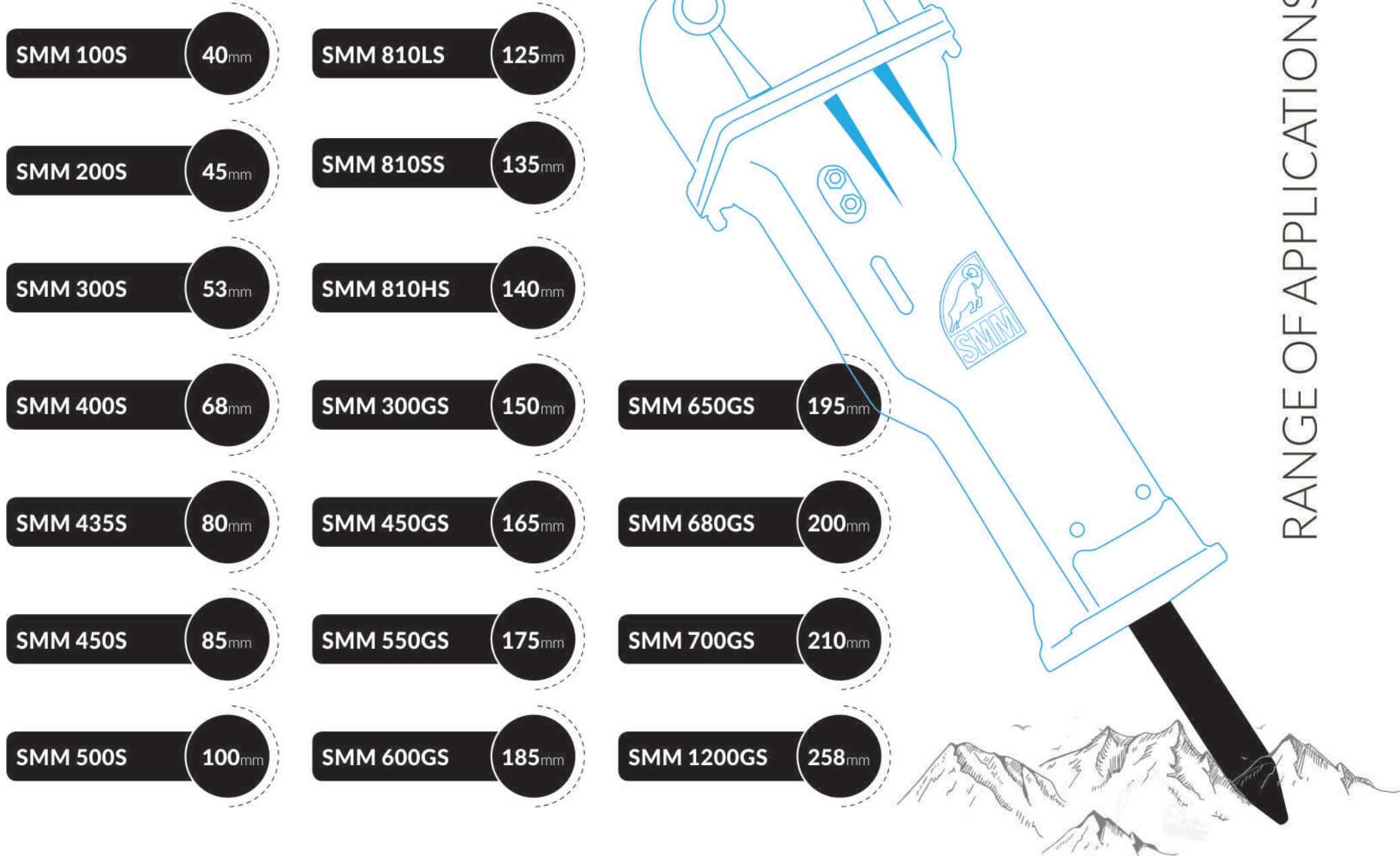
**SMM 700GS**  
70 - 120 TONS

**SMM 1200GS**  
90 - 140 TONS

## SERIES OF BREAKERS

<b>ACE</b>	<b>KOBELCO</b>
<b>bent</b>	<b>KOMATSU</b>
<b>Bobcat</b>	<b>Kubota</b>
<b>BULL</b>	<b>LIUGONG</b>
<b>CASE</b> CONSTRUCTION	<b>EarthMaster</b>
<b>CAT</b>	<b>MANITOU</b> GROUP
<b>DOOSAN</b>	<b>SANY</b>
<b>ESCORTS</b>	<b>SUMITOMO</b>
<b>HITACHI</b>	<b>VOLVO</b> Construction Equipment
<b>HYUNDAI</b> CONSTRUCTION EQUIPMENT	<b>XCMG</b>
<b>JCB</b>	<b>YANMAR</b>

## Range of Chisel



RANGE OF APPLICATIONS



# Branding

SMM, having firsthand experience facing ground reality of problems and hardships in handling equipment's to their optimum usage and output have been constantly to ensure undulating superior quality products to our CUSTOMERS at all times. The customer friendly vision envisaged by our earlier generations is encouraging us to be more customers centric.

Today, We are Proud of Having 4000+ Satisfied Customers over two decades of our active Presence with a record of Being Highest Installation base in India.

It is been Possible only Through our Skilled and dedicated workforce only, on 24 x7 basis...

IT PROVES SMM - AN EMPLOYEE  
**DRIVEN  
ORGANIZATION**

# OUR PRESENCE



 Corporate Office    Regional Office    SMM Network

Tamilnadu | Karnataka | Kerala | Andhra Pradesh | Telangana | Maharashtra  
Gujarat | Delhi | Bihar | Ranchi | Khanpur | Raipur | Indore | Udhaipur | Andaman





Corporate Office: **SMM EQUIPMENTS PVT LTD.,**  
585/1A, Rajaji Nagar, Singanallur, Coimbatore - 641 005, TN.IN  
+ 91 90039 56159 / + 91 90039 56156 / +91 98422 56156  
[business@smmequipments.com](mailto:business@smmequipments.com) / [www.smmequipments.com](http://www.smmequipments.com)

REGIONAL OFFICES: **BANGALORE | PUNE**

REGIONAL LOCATIONS: **KHANPUR | RAIPUR | INDORE | UDHAIPUR**